

## GREENTEST FTV100 UPGRADE PROCEDURE

FTV100 V2.1.6 firmware and Greenreport V4.5 software

### 1 Upgrading the FTV100 firmware to V2.1.6

**Upgrading of the instrument will erase all the data stored in the memory.**

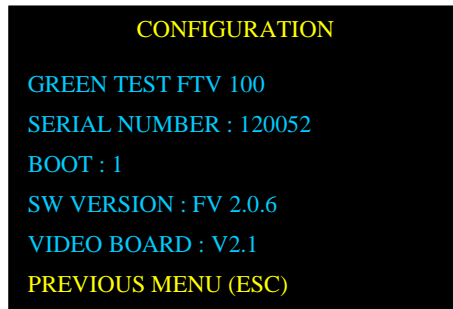
This procedure concerns instruments with firmware version V2.0.0 or higher.

Before upgrading your instrument, check the BOOT version on the instrument.  
Go to the CONFIGURATION menu.

Example: BOOT 1.

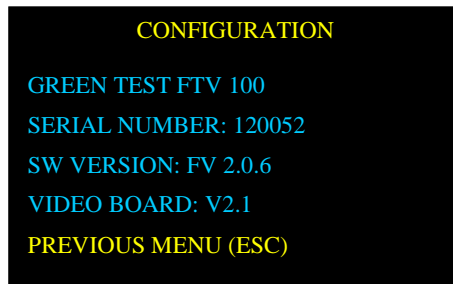
The appropriate loader must be used for the BOOT version present.

If it is BOOT 1, use version V2.1 of UPLOADER  
If it is BOOT 2, user version V3.0 of UPLOADER



```
CONFIGURATION
GREEN TEST FTV 100
SERIAL NUMBER : 120052
BOOT : 1
SW VERSION : FV 2.0.6
VIDEO BOARD : V2.1
PREVIOUS MENU (ESC)
```

If the BOOT information is not shown, the firmware is old and therefore necessarily uses BOOT 1.



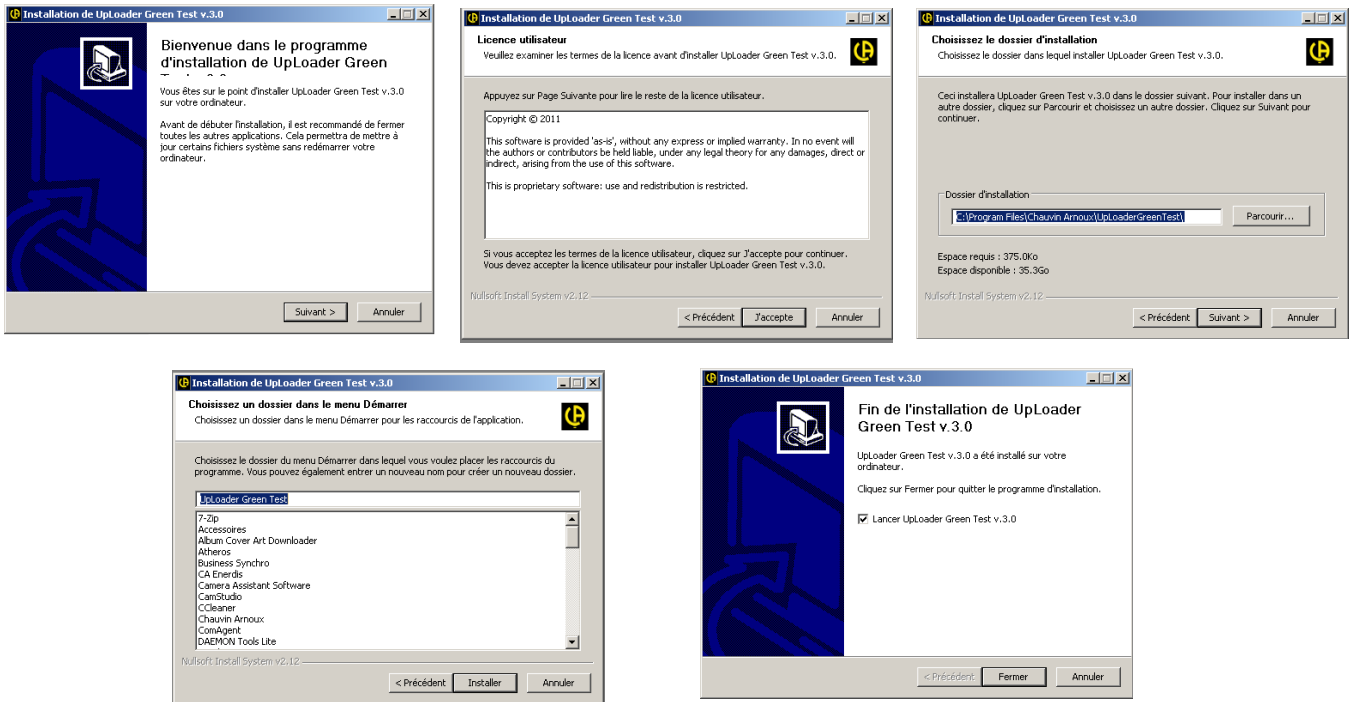
```
CONFIGURATION
GREEN TEST FTV 100
SERIAL NUMBER: 120052
SW VERSION: FV 2.0.6
VIDEO BOARD: V2.1
PREVIOUS MENU (ESC)
```

### 2 Installing the UPLOADER tool

#### ***For versions V3.0 and V2.1***

Unzip the xxx.ZIP file in a dedicated directory.

Run the application UpLoaderGreenTest\_v30\_uo.exe or UpLoaderGreenTest\_v21\_uo.exe.



## 3 Using the UPLOADER

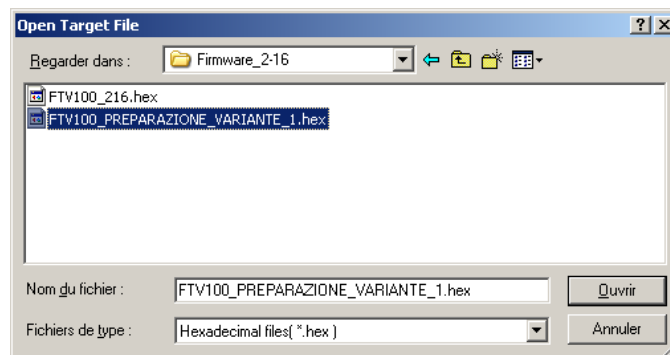
### 3.1 For version V2.1

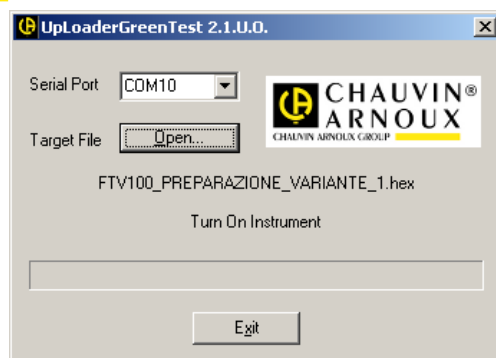
Run the UPLOADER application.

Select the serial port. It must be < 10.

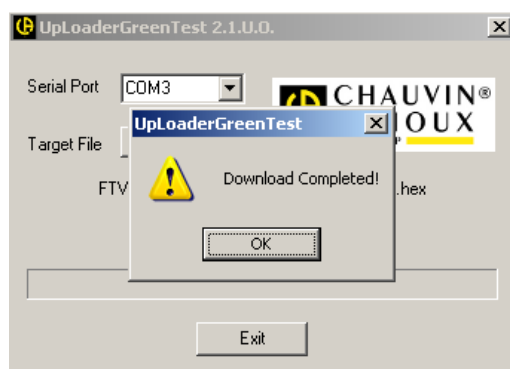
If necessary, check the port's communication speed in the Microsoft "Device Manager" menu. The speed must be set to 38400 bauds.

Before upgrading, you must load a file called FTV100\_PREPARAZIONE\_VARIANTE\_1.hex into the instrument to prepare the memory space. The FTV100 must be switched off at the beginning of this procedure.

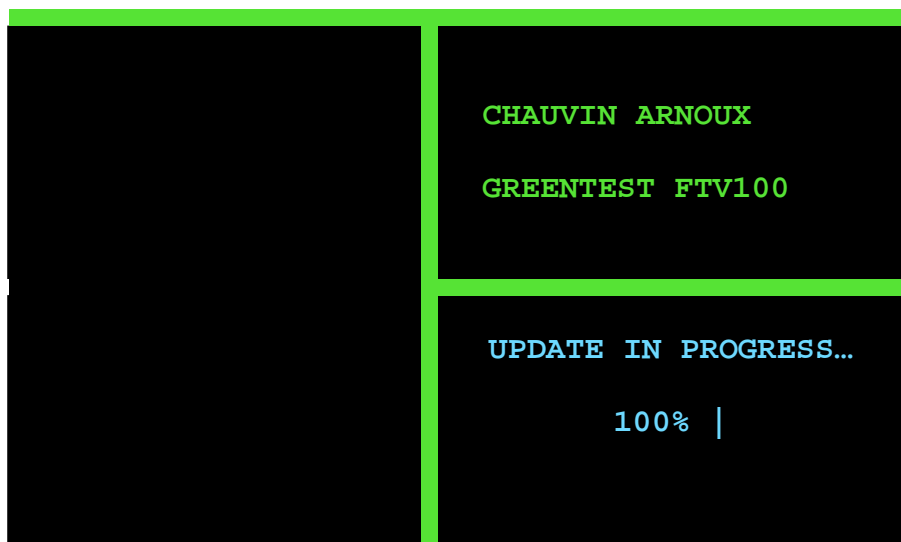




The UPLOADER software puts itself on standby. Power up the instrument. The data are loaded into the instrument automatically.

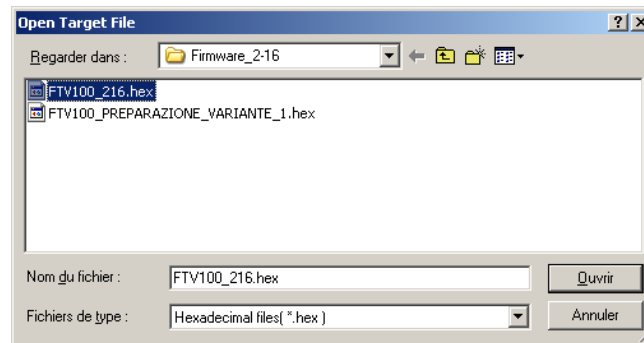


When the download has been completed, the instrument display shows the progress of the upgrade preparation process.

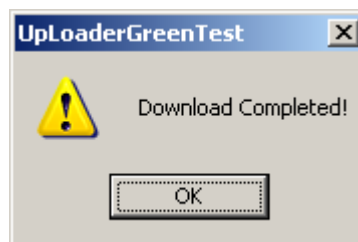


Once this has been 100% completed, switch off the instrument. Close the UPLOADER application by clicking on OK.

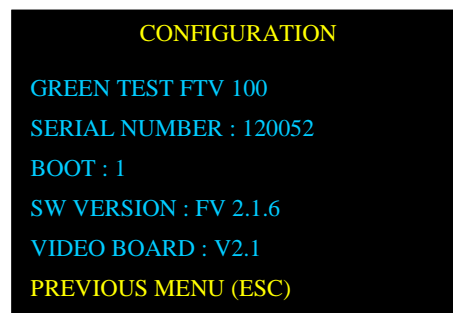
Now rerun the UPLOADER application, but this time to upgrade the instrument. Select the latest version of the firmware file.



Then start the upgrade.  
Wait until the following message is displayed:

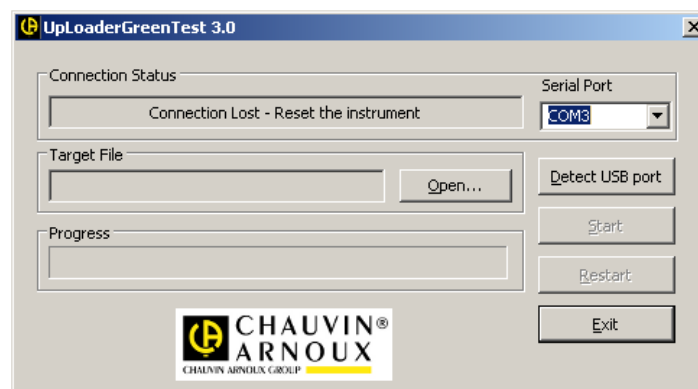


The FTV100 instrument configuration menu is then displayed. Upgrading is now complete.

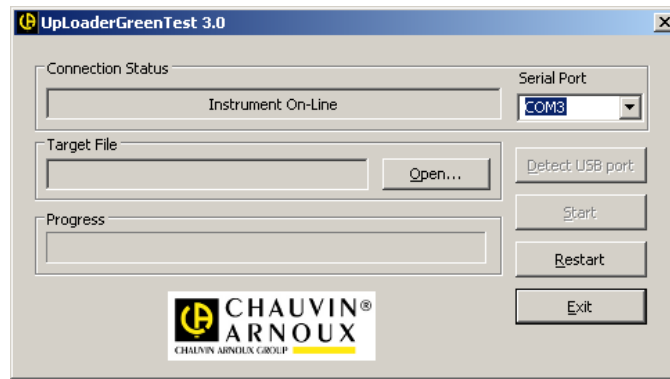


### 3.2 For version V3.0

Switch off the instrument and run the UPLOADER application.



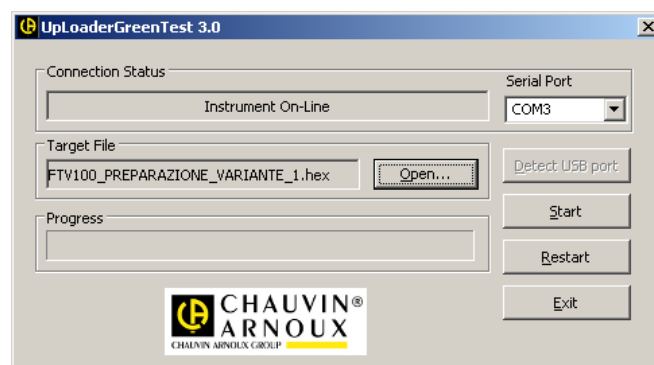
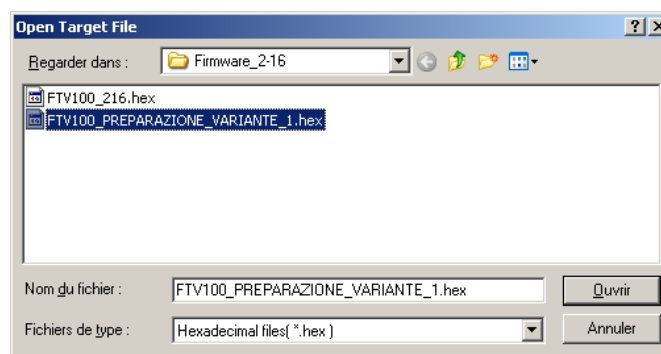
Select the serial port. The COM port must be < 10.  
If necessary, check the port's communication speed in the Microsoft "Device Manager" menu. The speed must be set to 38400 bauds.



Power up the instrument. Its screen remains dark.

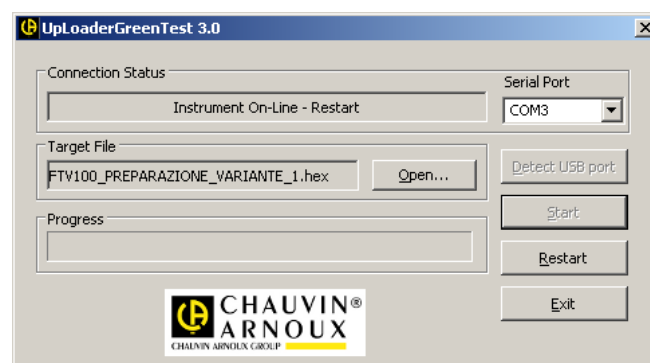
The connection status automatically changes to "Instrument On-Line".

Load the FTV100\_PREPARAZIONE\_VARIANTE\_1.hex preparation file into the instrument.

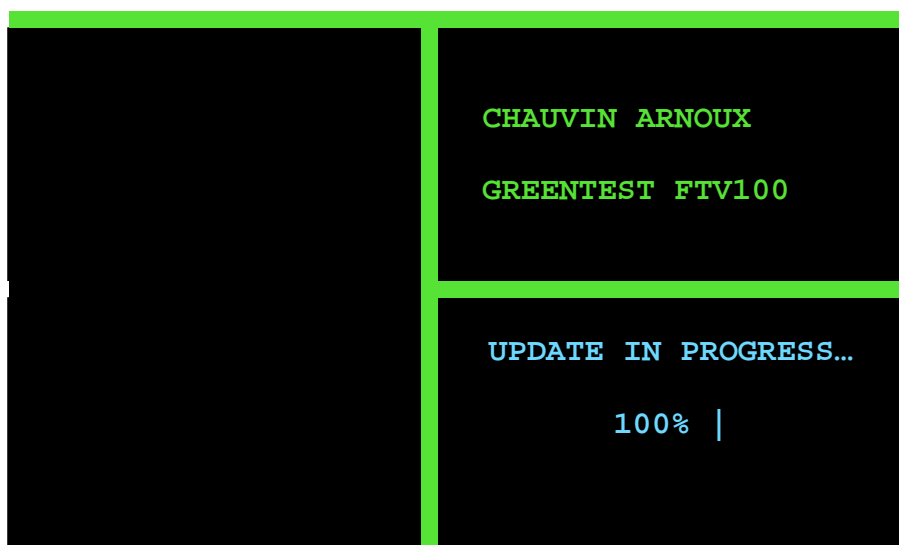


Click on Start to begin downloading.

Once downloading has been completed, click on Restart. Restart the instrument.

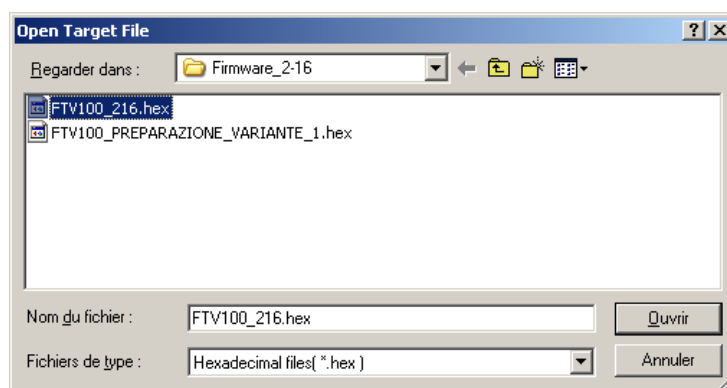


Once downloading has been completed, the memory space is formatted.



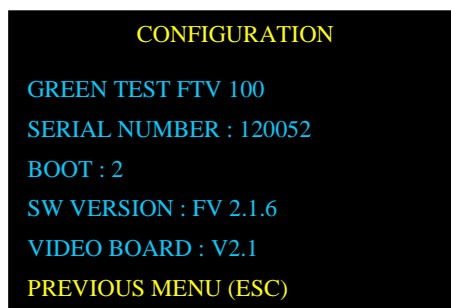
Switch off the instrument and then close the UPLOADER application by clicking on OK.

Restart the UPLOADER application, this time to load the new firmware. Select the COM port. Open the firmware file.



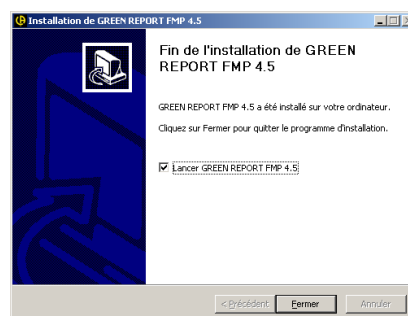
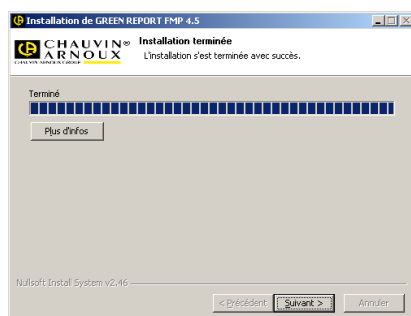
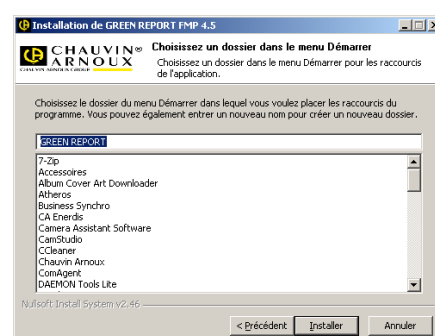
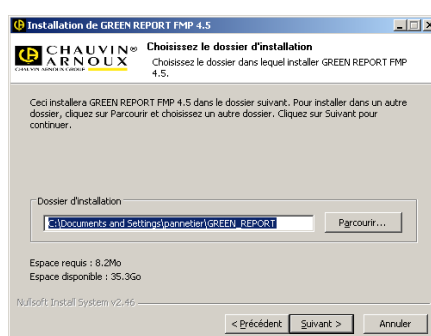
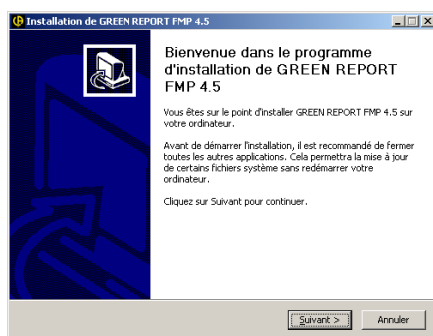
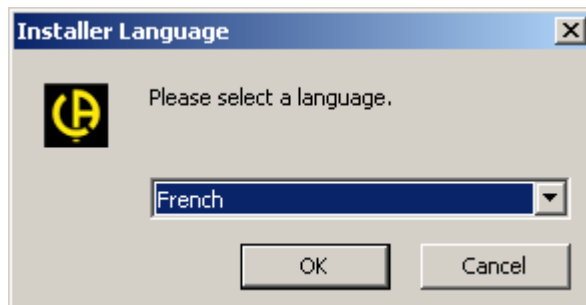
Click on Start.

Once downloading has been completed, click on Restart. Then click on Exit. The instrument powers up. The FTV100 instrument configuration menu is then displayed.



## 4 Upgrading the GreenReport software to version 4.5

Unzip the xxx.ZIP file in a dedicated directory.  
Run the installation procedure.



The latest version of the GreenReport software is now operational.

